

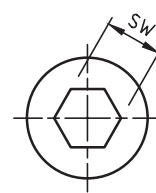
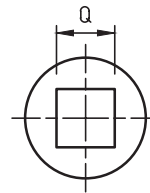
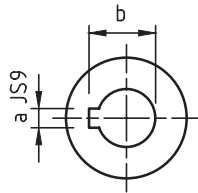
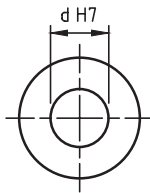
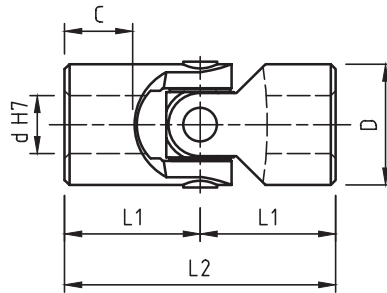


GIUNTI SINGOLI IN ACCIAIO INOX

STAINLESS STEEL SINGLE JOINTS

serie «X»
series (DIN 808)

- Angolo max. 45°
Max angle 45°
- "Esecuzione innesto rapido, vedi pagina 11".
"Quick release execution, see page 11".
- "Esecuzione a morsetto tipo CL1 o CL2, vedi pagine 20 e 21".
"Clamping hub execution type CL1 or CL2, see pages 20 and 21".
- Esecuzioni speciali a richiesta.
Special executions on request.



| Mod. Type | Codice / Code | d | D | L2 | L1 | C | Codice / Code | a | b | Q * | SW * | Peso Weight Kg |
|-----------|---------------|----|----|-----|----|----|---------------|---|------|-----|------|----------------|
| 01X | SX0S 0600 | 6 | 16 | 34 | 17 | 8 | SX0S062C | 2 | 7 | 6 | 6 | 0,05 |
| 02X | SX0S 0800 | 8 | 16 | 40 | 20 | 11 | SX0S082C | 2 | 9 | 8 | 8 | 0,05 |
| 03X | SX0S 1000 | 10 | 22 | 48 | 24 | 12 | SX0S102C | 3 | 11,4 | 10 | 10 | 0,10 |
| 04X | SX0S 1200 | 12 | 25 | 56 | 28 | 13 | SX0S122C | 4 | 13,8 | 12 | 12 | 0,16 |
| 1X | SX0S 1600 | 16 | 32 | 68 | 34 | 16 | SX0S162C | 5 | 18,3 | 16 | 16 | 0,30 |
| 3X | SX0S 2000 | 20 | 42 | 82 | 41 | 18 | SX0S202C | 6 | 22,8 | 20 | 20 | 0,60 |
| 5X | SX0S 2500 | 25 | 50 | 108 | 54 | 26 | SX0S252C | 8 | 28,3 | 25 | 25 | 1,20 |
| 6X | SX0S 3000 | 30 | 58 | 122 | 61 | 29 | SX0S302C | 8 | 33,3 | 30 | 30 | 1,85 |

MORO dal 1984
INDUSTRIAL FORNITURE S.N.C.

* = Non sempre disponibile a magazzino / Not always available in stock



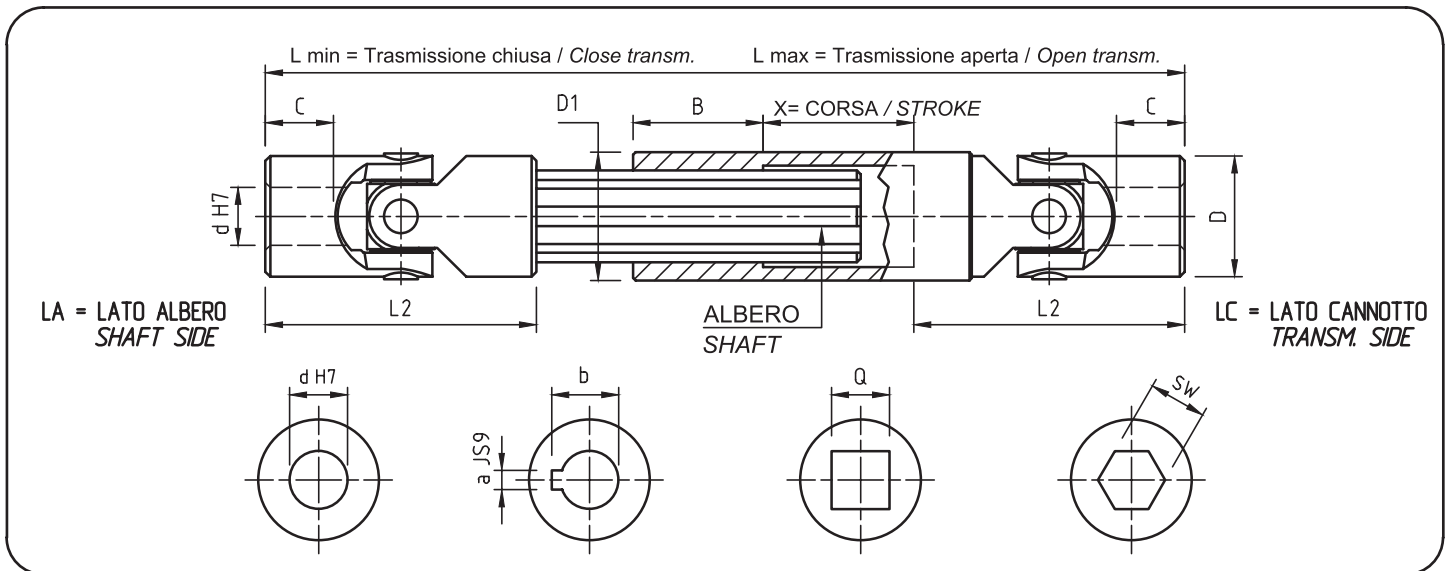
TRASMISSIONI ALLUNGABILI IN ACCIAIO INOX EXTENSIBLE TRANSMISSIONS IN STAINLESS STEEL

serie «X»
series (DIN 808)

- Lunghezza min. e max a richiesta:
Min. and max. lengths on request:

$$\frac{L. MIN.}{MIN. L.} > \frac{L. MAX. + 2 L2 + B}{2} \quad \text{CORSA X} \quad \text{STROKE X} < \frac{L. MAX. - 2 L2 - B}{2}$$

- Esecuzioni speciali a richiesta.
Special executions on request.



| Mod. Type | d | D | L2 | C | L min. | L max. | x | B | * a | * b | * Q | * SW | Albero Shaft | D1 |
|-----------|----|----|-----|----|--------------------------|--------|---|----|-----|------|-----|------|--------------|----|
| | | | | | a richiesta - on request | | | | | | | | | |
| 03XA | 10 | 22 | 48 | 12 | ← | → | — | 25 | 3 | 11,4 | 10 | 10 | 11 x 14 Z6 | 22 |
| 04XA | 12 | 25 | 56 | 13 | ← | → | — | 30 | 4 | 13,8 | 12 | 12 | 13 x 16 Z6 | 26 |
| 1XA | 16 | 32 | 68 | 16 | ← | → | — | 30 | 5 | 18,3 | 16 | 16 | 16 x 20 Z6 | 33 |
| 3XA | 20 | 42 | 82 | 18 | ← | → | — | 40 | 6 | 22,8 | 20 | 20 | 21 x 25 Z6 | 42 |
| 5XA | 25 | 50 | 108 | 26 | ← | → | — | 40 | 8 | 28,3 | 25 | 25 | 26 x 32 Z6 | 48 |
| 6XA | 30 | 58 | 122 | 29 | ← | → | — | 40 | 8 | 33,3 | 30 | 30 | 32 x 38 Z8 | 59 |

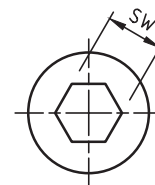
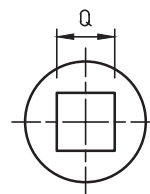
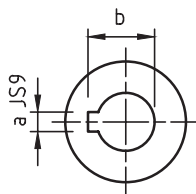
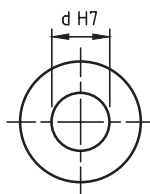
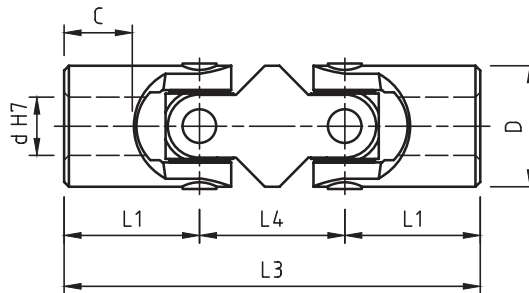


GIUNTI DOPPI IN ACCIAIO INOX

STAINLESS STEEL DOUBLE JOINTS

serie «X»
series (DIN 808)

- Angolo max. 90°
Max angle 90°
- "Esecuzione innesto rapido, vedi pagina 11".
"Quick release execution, see page 11".
- "Esecuzione a morsetto tipo CL1 o CL2, vedi pagine 20 e 21".
"Clamping hub execution type CL1 or CL2, see pages 20 and 21".
- Esecuzioni speciali a richiesta.
Special executions on request.



| Mod. Type | Codice / Code | d | D | L3 | L1 | L4 | C | Codice / Code | a | b | Q * | SW * | Peso Weight Kg |
|-----------|---------------|----|----|-----|----|----|----|---------------|---|------|-----|------|----------------|
| 01XD | SX0D 0600 | 6 | 16 | 56 | 17 | 22 | 8 | SX0D062C | 2 | 7 | 6 | 6 | 0,08 |
| 02XD | SX0D 0800 | 8 | 16 | 62 | 20 | 22 | 11 | SX0D082C | 2 | 9 | 8 | 8 | 0,08 |
| 03XD | SX0D 1000 | 10 | 22 | 74 | 24 | 26 | 12 | SX0D102C | 3 | 11,4 | 10 | 10 | 0,15 |
| 04XD | SX0D 1200 | 12 | 25 | 86 | 28 | 30 | 13 | SX0D122C | 4 | 13,8 | 12 | 12 | 0,25 |
| 1XD | SX0D 1600 | 16 | 32 | 105 | 34 | 37 | 16 | SX0D162C | 5 | 18,3 | 16 | 16 | 0,45 |
| 3XD | SX0D 2000 | 20 | 42 | 129 | 41 | 47 | 18 | SX0D202C | 6 | 22,8 | 20 | 20 | 1,00 |
| 5XD | SX0D 2500 | 25 | 50 | 163 | 54 | 55 | 26 | SX0D252C | 8 | 28,3 | 25 | 25 | 2,00 |
| 6XD | SX0D 3000 | 30 | 58 | 190 | 61 | 68 | 29 | SX0D302C | 8 | 33,3 | 30 | 30 | 2,90 |

MORO dal 1984
INDUSTRIAL FORNITURE S.N.C.

*= Non sempre disponibile a magazzino / Not always available in stock