



GIUNTI SINGOLI

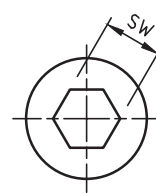
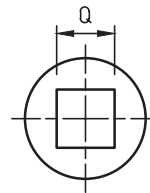
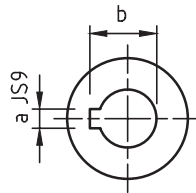
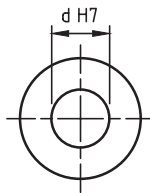
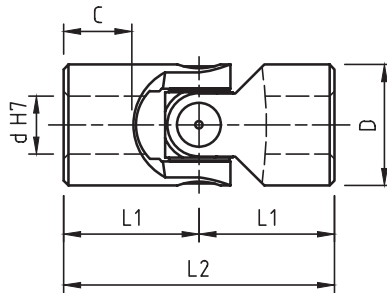
SINGLE JOINTS



MORO dal 1984 serie «G»

INDUSTRIAL FORNITURE series (DIN 808)

- Bussole di scorrimento anti-usura in acciaio cementato e temperato.
Wear resistant sliding bushes from cemented and hardened steel.
- Robusti precisi e versatili; vasto campo di applicazione.
Strong precise and versatile; wide application field.
- Angolo max : 45°. Giri max. 1000/min.
Max angle : 45°. Max speed - 1000 R.P.M.
- "G" corrispondenti DIN 808 - "GB" corrispondenti DIN 808/7551
"G" to DIN 808 - "GB" to DIN 808/7551
- Esecuzioni speciali a richiesta.
Special executions on request.



Mod. Type	Codice / Code	d	D	L2	L1	C	Codice / Code	Codice / Code	a	b	Codice / Code	Q	* SW	Peso Weight Kg
01G	SG0S 0600	6	16	34	17	8	SG0S 061C	SG0S 062C	2	7	SG0S 062Q	6	6	0,05
02G	SG0S 0800	8	16	40	20	11	SG0S 081C	SG0S 082C	2	9	SG0S 082Q	8	8	0,05
03G	SG0S 1000	10	22	48	24	12	SG0S 101C	SG0S 102C	3	11,4	SG0S 102Q	10	10	0,10
04G	SG0S 1200	12	25	56	28	13	SG0S 121C	SG0S 122C	4	13,8	SG0S 122Q	12	12	0,16
05G	SG0S 1400	14	28	60	30	14	SG0S 141C	SG0S 142C	5	16,3	SG0S 142Q	14	14	0,20
1G	SG0S 1600	16	32	68	34	16	SG0S 161C	SG0S 162C	5	18,3	SG0S 162Q	16	16	0,30
2G	SG0S 1800	18	36	74	37	17	SG0S 181C	SG0S 182C	6	20,8	SG0S 182Q	18	18	0,45
3G	SG0S 2000	20	42	82	41	18	SG0S 201C	SG0S 202C	6	22,8	SG0S 202Q	20	20	0,60
4G	SG0S 2200	22	45	95	47,5	22	SG0S 221C	SG0S 222C	6	24,8	SG0S 222Q	22	22	0,95
5G	SG0S 2500	25	50	108	54	26	SG0S 251C	SG0S 252C	8	28,3	SG0S 252Q	25	25	1,20
6G	SG0S 3000	30	58	122	61	29	SG0S 301C	SG0S 302C	8	33,3	SG0S 302Q	30	30	1,85
6G1	SG0S 3200	32	58	130	65	33	SG0S 321C	SG0S 322C	10	35,3	SG0S 322Q	30	30	2,00
7G	SG0S 3500	35	70	140	70	33	SG0S 351C	SG0S 352C	10	38,3	—	**	**	3,15
8G	SG0S 4000	40	80	160	80	38	SG0S 401C	SG0S 402C	12	43,3	—	**	**	4,60
9G	SG0S 5000	50	95	190	95	46	SG0S 501C	SG0S 502C	14	53,8	—	**	**	7,60
03GB	SGBS 1000	10	16	52	26	15	SGBS 101C	SGBS 102C	3	11,4	SGBS 082Q	8	8	0,05
04GB	SGBS 1200	12	22	62	31	18	SGBS 121C	SGBS 122C	4	13,8	SGBS 102Q	10	10	0,12
1GB	SGBS 1600	16	25	74	37	21	SGBS 161C	SGBS 162C	5	18,3	SGBS 122Q	12	12	0,20
3GB	SGBS 2000	20	32	86	43	24	SGBS 201C	SGBS 202C	6	22,8	SGBS 162Q	16	16	0,35
5GB	SGBS 2500	25	42	108	54	31	SGBS 251C	SGBS 252C	8	28,3	SGBS 202Q	20	20	0,80
6GB	SGBS 3000	30	50	132	66	38	SGBS 301C	SGBS 302C	8	33,3	SGBS 252Q	25	25	1,20
8GB	SGBS 4000	40	70	166	83	46	SGBS 401C	SGBS 402C	12	43,3	—	**	**	2,90

* = Non sempre disponibile a magazzino / Not always available in stock

** = A richiesta / On request



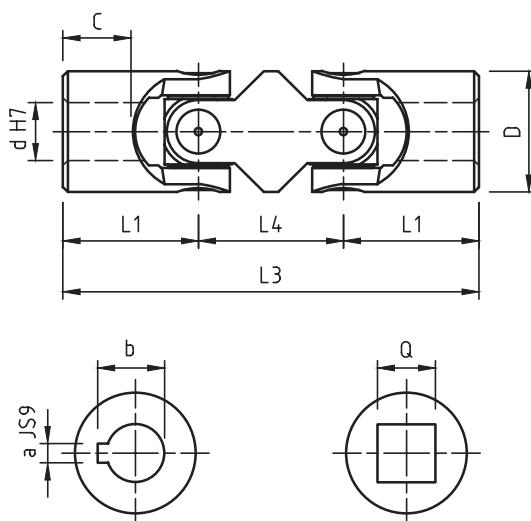
GIUNTI DOPPI

DOUBLE JOINTS



serie «G»
series (DIN 808)

- Bussole di scorrimento anti-usura in acciaio cementato e temperato.
Wear resistant sliding bushes from cemented and hardened steel.
- Robusti precisi e versatili; vasto campo di applicazione.
Strong precise and versatile; wide application field.
- Angolo max : 90°. Giri max. 1000/min.
Max angle : 90°. Max speed 1000 R.P.M.
- "GD" corrispondenti DIN 808 - "GBD" corrispondenti DIN 808/7551
"GD" to DIN 808 - "GBD" to DIN 808/7551
- Esecuzioni speciali a richiesta.
Special executions on request.



Mod. Type	Codice / Code	d	D	L3	L1	L4	C	Codice / Code	Codice / Code	a	b	Codice / Code	Q	* SW	Peso Weight Kg
01GD	SG0D 0600	6	16	56	17	22	8	SG0D 061C	SG0D 062C	2	7	SG0D 062Q	6	6	0,08
02GD	SG0D 0800	8	16	62	20	22	11	SG0D 081C	SG0D 082C	2	9	SG0D 082Q	8	8	0,08
03GD	SG0D 1000	10	22	74	24	26	12	SG0D 101C	SG0D 102C	3	11,4	SG0D 102Q	10	10	0,15
04GD	SG0D 1200	12	25	86	28	30	13	SG0D 121C	SG0D 122C	4	13,8	SG0D 122Q	12	12	0,25
05GD	SG0D 1400	14	28	96	30	36	14	SG0D 141C	SG0D 142C	5	16,3	SG0D 142Q	14	14	0,40
1GD	SG0D 1600	16	32	105	34	37	16	SG0D 161C	SG0D 162C	5	18,3	SG0D 162Q	16	16	0,45
2GD	SG0D 1800	18	36	114	37	40	17	SG0D 181C	SG0D 182C	6	20,8	SG0D 182Q	18	18	0,70
3GD	SG0D 2000	20	42	129	41	47	18	SG0D 201C	SG0D 202C	6	22,8	SG0D 202Q	20	20	1,00
4GD	SG0D 2200	22	45	145	47,5	50	22	SG0D 221C	SG0D 222C	6	24,8	SG0D 222Q	22	22	1,55
5GD	SG0D 2500	25	50	163	54	55	26	SG0D 251C	SG0D 252C	8	28,3	SG0D 252Q	25	25	2,00
6GD	SG0D 3000	30	58	190	61	68	29	SG0D 301C	SG0D 302C	8	33,3	SG0D 302Q	30	30	2,90
6GD1	SG0D 3200	32	58	198	65	68	33	SG0D 321C	SG0D 322C	10	35,3	SG0D 322Q	30	30	3,00
7GD	SG0D 3500	35	70	212	70	72	33	SG0D 351C	SG0D 352C	10	38,3	—	**	**	4,75
8GD	SG0D 4000	40	80	245	80	85	38	SG0D 401C	SG0D 402C	12	43,3	—	**	**	7,20
9GD	SG0D 5000	50	95	290	95	100	46	SG0D 501C	SG0D 502C	14	53,8	—	**	**	12,00
03GBD	SGBD 1000	10	16	74	26	22	15	SGBD 101C	SGBD 102C	3	11,4	SGBD 082Q	8	8	0,08
04GBD	SGBD 1200	12	22	88	31	26	18	SGBD 121C	SGBD 122C	4	13,8	SGBD 102Q	10	10	0,20
1GBD	SGBD 1600	16	25	104	37	30	21	SGBD 161C	SGBD 162C	5	18,3	SGBD 122Q	12	12	0,30
3GBD	SGBD 2000	20	32	123	43	37	24	SGBD 201C	SGBD 202C	6	22,8	SGBD 162Q	16	16	0,50
5GBD	SGBD 2500	25	42	155	54	47	31	SGBD 251C	SGBD 252C	8	28,3	SGBD 202Q	20	20	1,20
6GBD	SGBD 3000	30	50	187	66	55	38	SGBD 301C	SGBD 302C	8	33,3	SGBD 252Q	25	25	1,70
8GBD	SGBD 4000	40	70	238	83	72	46	SGBD 401C	SGBD 402C	12	43,3	—	**	**	4,30

*= Non sempre disponibile a magazzino / Not always available in stock

**= A richiesta / On request



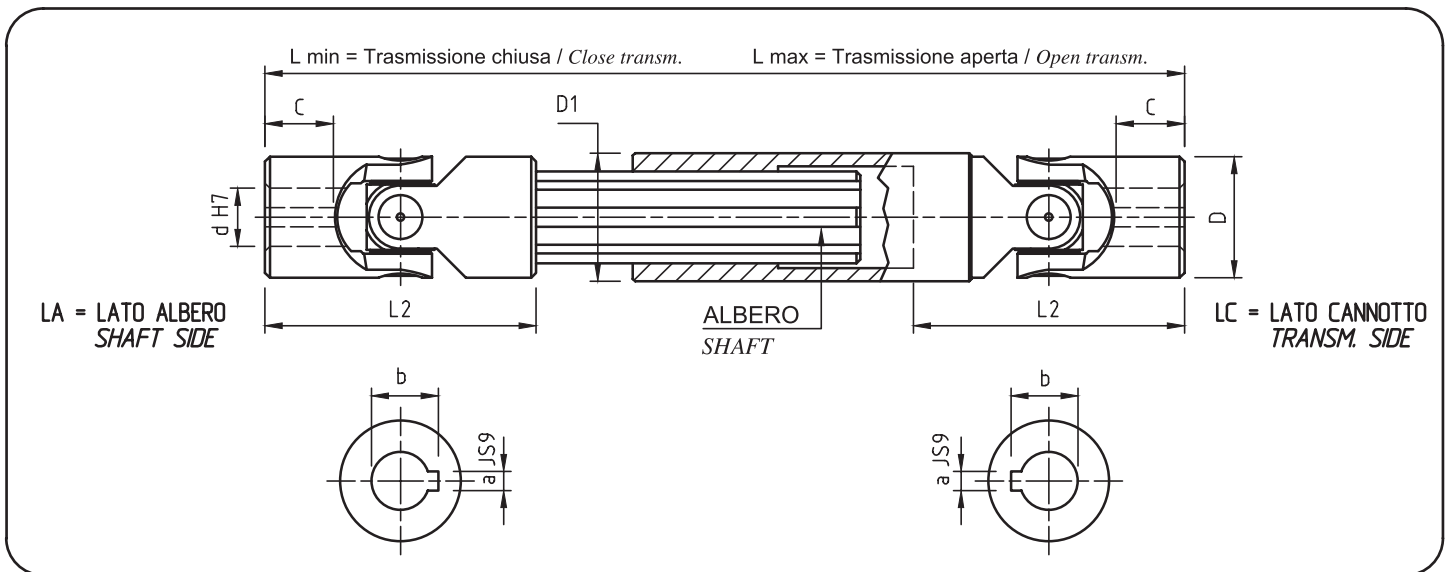
TRASMISSIONI ALLUNGABILI STANDARD

STANDARD EXTENSIBLE TRANSMISSIONS

serie «G»
series (DIN 808)

- Giunti serie «G» con bussole di scorrimento anti-usura.
Joints series «G» with wear resistant sliding bushes.
- Completi di cave per linguetta.
Complete with keyways.
- Ampia gamma di lunghezze per ogni modello.
Wide range of lengths per model.
- Consegna pronta.
Ready delivery.

MORO *dal 1984*
INDUSTRIAL FORNITURE



Mod. Type	Codice / Code	d	D	L2	C	L min.	L max.	corsa stroke	a	b	Albero Shaft	D1	Peso Weight Kg
03GA1	SG0A 1010	10	22	48	12	140	170	30	3	11,4	11 x 14 Z6	22	0,31
03GA15	SG0A 1015	10	22	48	12	160	200	40	3	11,4	11 x 14 Z6	22	0,36
03GA2	SG0A 1020	10	22	48	12	180	240	60	3	11,4	11 x 14 Z6	22	0,38
03GA25	SG0A 1025	10	22	48	12	230	330	100	3	11,4	11 x 14 Z6	22	0,50
04GA1	SG0A 1210	12	25	56	13	160	190	30	4	13,8	13 x 16 Z6	26	0,50
04GA15	SG0A 1215	12	25	56	13	180	225	45	4	13,8	13 x 16 Z6	26	0,56
04GA2	SG0A 1220	12	25	56	13	200	270	70	4	13,8	13 x 16 Z6	26	0,62
04GA23	SG0A 1223	12	25	56	13	220	300	80	4	13,8	13 x 16 Z6	26	0,67
04GA26	SG0A 1226	12	25	56	13	250	355	105	4	13,8	13 x 16 Z6	26	0,76
04GA29	SG0A 1229	12	25	56	13	280	420	140	4	13,8	13 x 16 Z6	26	0,84
04GA32	SG0A 1232	12	25	56	13	300	450	150	4	13,8	13 x 16 Z6	26	0,90
05GA1	SG0A 1410	14	28	60	14	170	200	30	5	16,3	13 x 16 Z6	29	0,62
05GA15	SG0A 1415	14	28	60	14	180	220	40	5	16,3	13 x 16 Z6	29	0,64
05GA18	SG0A 1418	14	28	60	14	200	260	60	5	16,3	13 x 16 Z6	29	0,72
05GA2	SG0A 1420	14	28	60	14	220	300	80	5	16,3	13 x 16 Z6	29	0,78
05GA23	SG0A 1423	14	28	60	14	250	350	100	5	16,3	13 x 16 Z6	29	0,87
05GA26	SG0A 1426	14	28	60	14	280	420	140	5	16,3	13 x 16 Z6	29	0,96



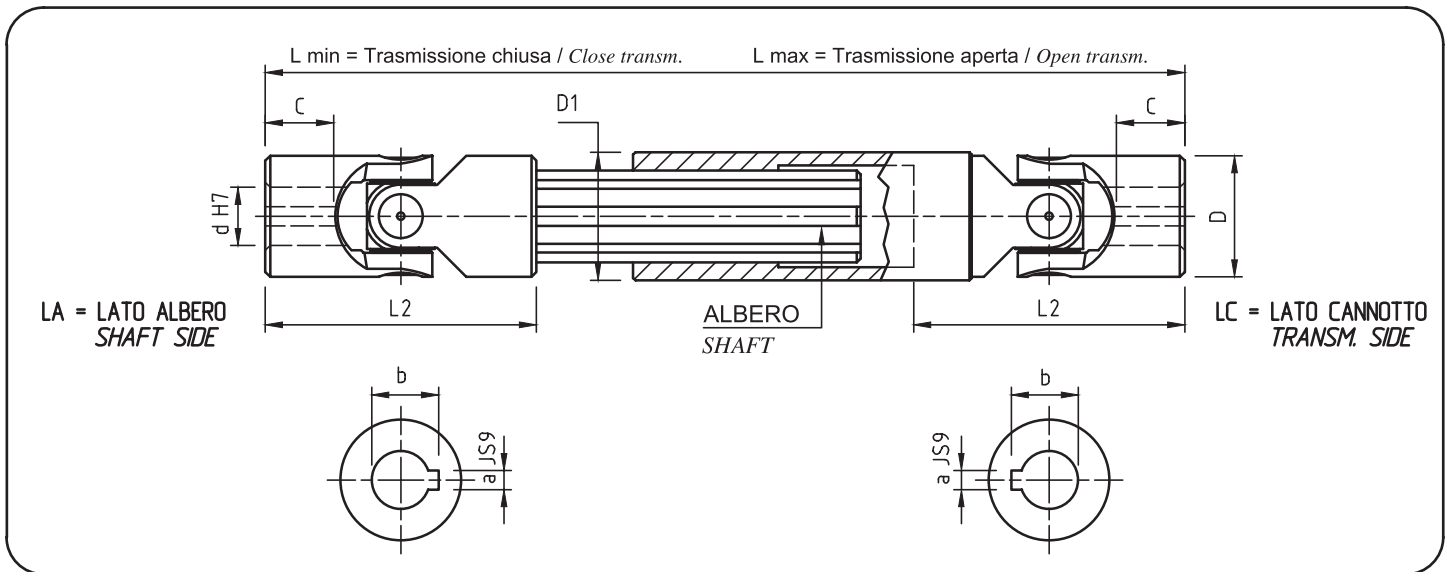
TRASMISSIONI ALLUNGABILI STANDARD

STANDARD EXTENSIBLE TRANSMISSIONS

serie «G»
series (DIN 808)

- Giunti serie «G» con bussole di scorrimento anti-usura.
Joints series «G» with wear resistant sliding bushes.
- Completi di cave per linguetta.
Complete with keyways.
- Ampia gamma di lunghezze per ogni modello.
Wide range of lengths per model.
- Consegna pronta.
Ready delivery.

MORO dal 1984
INDUSTRIAL FORNITURE



Mod. Type	Codice / Code	d	D	L2	C	L min.	L max.	corsa stroke	a	b	Albero Shaft	D1	Peso Weight Kg
05GA29	SG0A 1429	14	28	60	14	300	450	150	5	16,3	13 x 16 Z6	29	1,03
05GA32	SG0A 1432	14	28	60	14	350	550	200	5	16,3	13 x 16 Z6	29	1,17
05GA35	SG0A 1435	14	28	60	14	400	650	250	5	16,3	13 x 16 Z6	29	1,33
1GA1	SG0A 1610	16	32	68	16	190	220	30	5	18,3	16 x 20 Z6	32	0,90
1GA15	SG0A 1615	16	32	68	16	210	250	40	5	18,3	16 x 20 Z6	32	0,98
1GA2	SG0A 1620	16	32	68	16	240	320	80	5	18,3	16 x 20 Z6	32	1,10
1GA23	SG0A 1623	16	32	68	16	250	350	100	5	18,3	16 x 20 Z6	32	1,14
1GA26	SG0A 1626	16	32	68	16	275	390	115	5	18,3	16 x 20 Z6	32	1,24
1GA29	SG0A 1629	16	32	68	16	300	430	130	5	18,3	16 x 20 Z6	32	1,33
1GA32	SG0A 1632	16	32	68	16	380	590	210	5	18,3	16 x 20 Z6	32	1,60
1GA35	SG0A 1635	16	32	68	16	400	630	230	5	18,3	16 x 20 Z6	32	1,73
2GA1	SG0A 1810	18	36	74	17	230	280	50	6	20,8	18 x 22 Z6	37	1,35
2GA15	SG0A 1815	18	36	74	17	250	320	70	6	20,8	18 x 22 Z6	37	1,46
2GA18	SG0A 1818	18	36	74	17	270	370	100	6	20,8	18 x 22 Z6	37	1,55
2GA2	SG0A 1820	18	36	74	17	290	400	110	6	20,8	18 x 22 Z6	37	1,66
2GA23	SG0A 1823	18	36	74	17	300	415	115	6	20,8	18 x 22 Z6	37	1,71
2GA26	SG0A 1826	18	36	74	17	400	620	220	6	20,8	18 x 22 Z6	37	2,23
2GA29	SG0A 1829	18	36	74	17	500	820	320	6	20,8	18 x 22 Z6	37	2,75



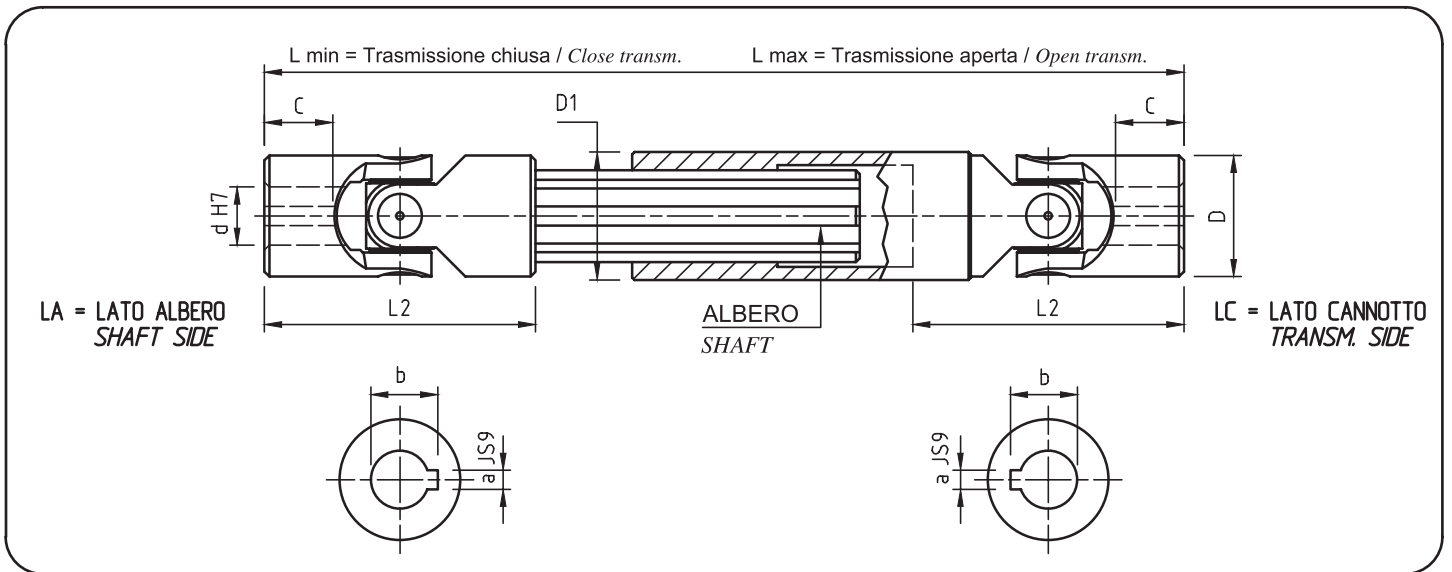
TRASMISSIONI ALLUNGABILI STANDARD

STANDARD EXTENSIBLE TRANSMISSIONS

serie «G»
series (DIN 808)

- Giunti serie «G» con bussole di scorrimento anti-usura.
Joints series «G» with wear resistant sliding bushes.
- Completi di cave per linguetta.
Complete with keyways.
- Ampia gamma di lunghezze per ogni modello.
Wide range of lengths per model.
- Consegna pronta.
Ready delivery.

MORO dal 1984
INDUSTRIAL FORNITURE



Mod. Type	Codice / Code	d	D	L2	C	L min.	L max.	corsa stroke	a	b	Albero Shaft	D1	Peso Weight Kg
3GA1	SG0A 2010	20	42	82	18	250	300	50	6	22,8	21 x 25 Z6	42	1,99
3GA15	SG0A 2015	20	42	82	18	270	340	70	6	22,8	21 x 25 Z6	42	2,12
3GA18	SG0A 2018	20	42	82	18	290	380	90	6	22,8	21 x 25 Z6	42	2,25
3GA2	SG0A 2020	20	42	82	18	320	440	120	6	22,8	21 x 25 Z6	42	2,46
3GA23	SG0A 2023	20	42	82	18	380	560	180	6	22,8	21 x 25 Z6	42	2,86
3GA26	SG0A 2026	20	42	82	18	420	640	220	6	22,8	21 x 25 Z6	42	3,13
3GA29	SG0A 2029	20	42	82	18	500	800	300	6	22,8	21 x 25 Z6	42	3,66
4GA05	SG0A 2205	22	45	95	22	250	280	30	6	24,8	23 x 28 Z6	47	2,35
4GA1	SG0A 2210	22	45	95	22	270	320	50	6	24,8	23 x 28 Z6	47	2,51
4GA15	SG0A 2215	22	45	95	22	290	350	60	6	24,8	23 x 28 Z6	47	2,67
4GA2	SG0A 2220	22	45	95	22	330	430	100	6	24,8	23 x 28 Z6	47	3,00
4GA23	SG0A 2223	22	45	95	22	350	470	120	6	24,8	23 x 28 Z6	47	3,16
4GA26	SG0A 2226	22	45	95	22	470	710	240	6	24,8	23 x 28 Z6	47	4,13
5GA1	SG0A 2510	25	50	108	26	295	345	50	8	28,3	26 x 32 Z6	52	3,39
5GA15	SG0A 2515	25	50	108	26	310	375	65	8	28,3	26 x 32 Z6	52	3,52
5GA2	SG0A 2520	25	50	108	26	350	450	100	8	28,3	26 x 32 Z6	52	3,92
5GA23	SG0A 2523	25	50	108	26	380	500	120	8	28,3	26 x 32 Z6	52	4,20
5GA26	SG0A 2526	25	50	108	26	420	590	170	8	28,3	26 x 32 Z6	52	4,59
5GA29	SG0A 2529	25	50	108	26	460	660	200	8	28,3	26 x 32 Z6	52	4,98
5GA32	SG0A 2532	25	50	108	26	500	745	245	8	28,3	26 x 32 Z6	52	5,37



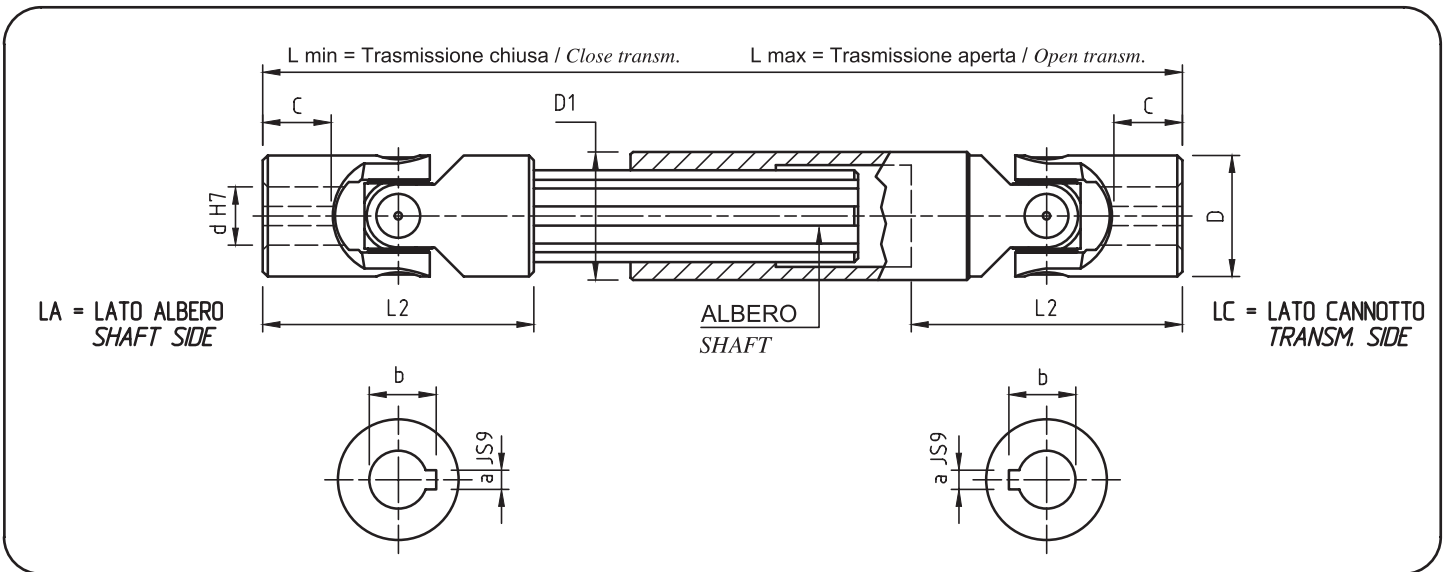
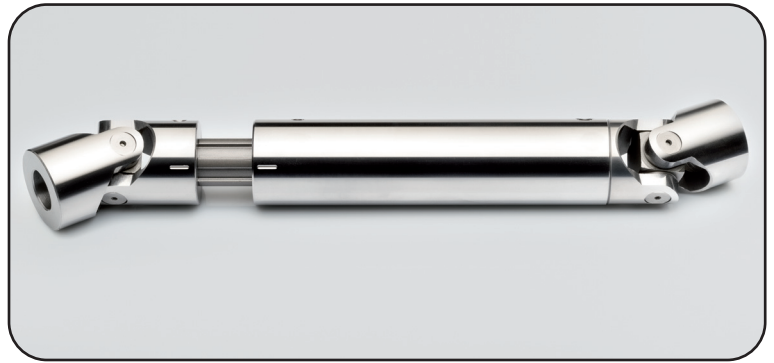
TRASMISSIONI ALLUNGABILI STANDARD

STANDARD EXTENSIBLE TRANSMISSIONS

serie «G»
series (DIN 808)

- Giunti serie «G» con bussole di scorrimento anti-usura.
Joints series «G» with wear resistant sliding bushes.
- Completi di cave per linguetta.
Complete with keyways.
- Ampia gamma di lunghezze per ogni modello.
Wide range of lengths per model.
- Consegna pronta.
Ready delivery.

MORO dal 1984
INDUSTRIAL FORNITURE



Mod. Type	Codice / Code	d	D	L2	C	L min.	L max.	corsa stroke	a	b	Albero Shaft	D1	Peso Weight Kg
6GA1	SG0A 3010	30	58	122	29	330	380	50	8	33,3	32 x 38 Z8	58	4,90
6GA15	SG0A 3015	30	58	122	29	350	420	70	8	33,3	32 x 38 Z8	58	5,17
6GA18	SG0A 3018	30	58	122	29	370	455	85	8	33,3	32 x 38 Z8	58	5,42
6GA2	SG0A 3020	30	58	122	29	400	510	110	8	33,3	32 x 38 Z8	58	5,85
6GA23	SG0A 3023	30	58	122	29	450	620	170	8	33,3	32 x 38 Z8	58	6,48
6GA26	SG0A 3026	30	58	122	29	500	720	220	8	33,3	32 x 38 Z8	58	7,14
6GA29	SG0A 3029	30	58	122	29	540	795	255	8	33,3	32 x 38 Z8	58	7,69



TRASMISSIONI ALLUNGABILI

EXTENSIBLE TRANSMISSIONS

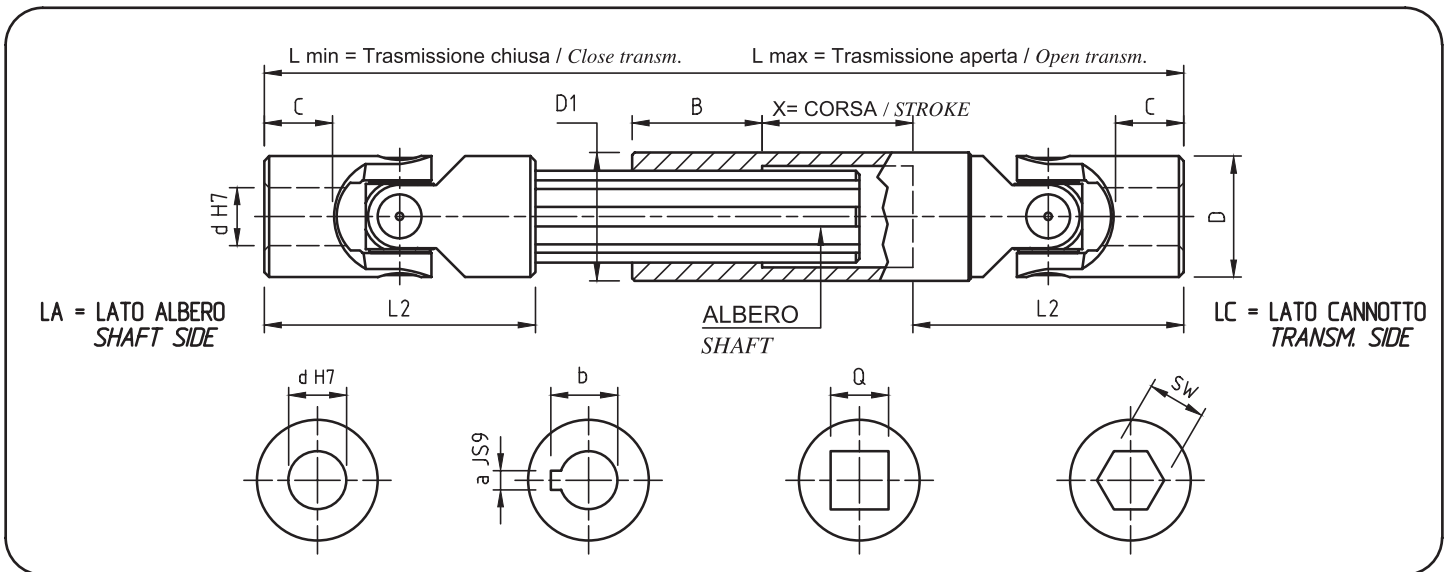
serie «G»
series (DIN 808)

● Giunti serie «G» con bussole di scorrimento anti-usura.
Joints series «G» with wear resistant sliding bushes.

● Lunghezze min. e max. a richiesta:
Min. and max. lengths on request:

$$\frac{L. MIN.}{MIN. L.} > \frac{L. MAX. + 2 L2 + B}{2} \quad \text{CORSA X} < \frac{L. MAX. - 2 L2 - B}{2}$$

● Esecuzioni speciali a richiesta.
Special executions on request.



Mod. Type	d	D	L2	C	L min.	L max.	x	B	a	b	Q	* SW	Albero Shaft	D1
					a richiesta - on request									
01GA	6	16	34	8	←	→	—	25	2	7	6	6	SW 8	16
02GA	8	16	40	11	←	→	—	25	2	9	8	8	SW 8	16
03GA	10	22	48	12	←	→	—	30	3	11,4	10	10	11 x 14 Z6	22
04GA	12	25	56	13	←	→	—	40	4	13,8	12	12	13 x 16 Z6	26
05GA	14	28	60	14	←	→	—	40	5	16,3	14	14	13 x 16 Z6	29
1GA	16	32	68	16	←	→	—	40	5	18,3	16	16	16 x 20 Z6	32
2GA	18	36	74	17	←	→	—	40	6	20,8	18	18	18 x 22 Z6	37
3GA	20	42	82	18	←	→	—	45	6	22,8	20	20	21 x 25 Z6	42
4GA	22	45	95	22	←	→	—	45	6	24,8	22	22	23 x 28 Z6	47
5GA	25	50	108	26	←	→	—	45	8	28,3	25	25	26 x 32 Z6	52
6GA	30	58	122	29	←	→	—	50	8	33,3	30	30	32 x 38 Z8	58
6GA1	32	58	126	33	←	→	—	50	10	35,3	30	30	32 x 38 Z8	58
7GA	35	70	140	33	←	→	—	70	10	38,3	**	**	36 x 42 Z8	70
8GA	40	80	160	38	←	→	—	80	12	43,3	**	**	42 x 48 Z8	80
9GA	50	95	190	46	←	→	—	90	14	53,8	**	**	46 x 54 Z8	95
03GBA	10	16	46	15	←	→	—	25	3	11,4	8	8	SW 8	16
04GBA	12	22	55	18	←	→	—	30	4	13,8	10	10	11 x 14 Z6	22
1GBA	16	25	65	21	←	→	—	40	5	18,3	12	12	13 x 16 Z6	26
3GBA	20	32	77	24	←	→	—	40	6	22,8	16	16	16 x 20 Z6	32
5GBA	25	42	95	31	←	→	—	45	8	28,3	20	20	21 x 25 Z6	42
6GBA	30	50	120	38	←	→	—	45	8	33,3	25	25	26 x 32 Z6	52
8GBA	40	70	155	46	←	→	—	70	12	43,3	**	**	36 x 42 Z8	70

*= Non sempre disponibile a magazzino / Not always available in stock

**= A richiesta / On request



GIUNTI SINGOLI - INNESTO RAPIDO

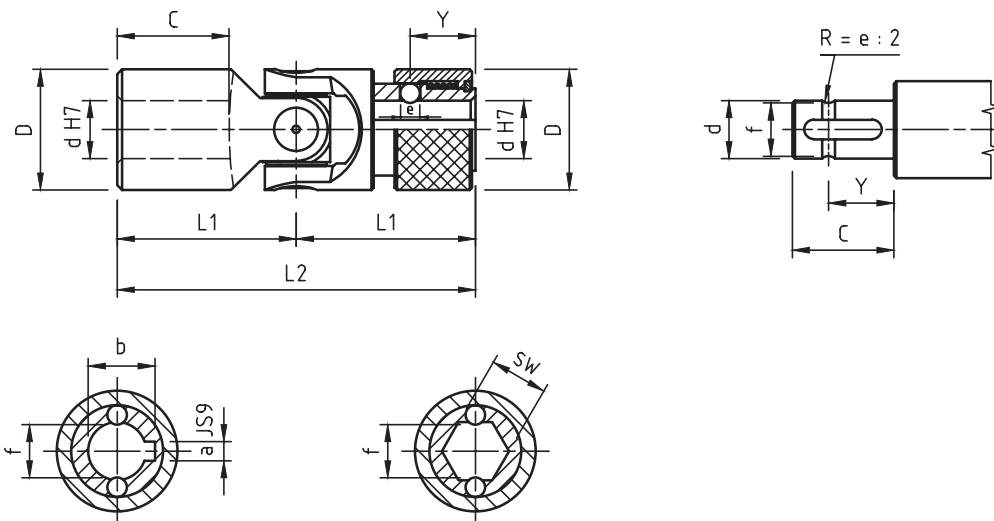
Mod. GR: Bussole di Scorrimento

SINGLE JOINTS - QUICK RELEASE
Type GR: Sliding Bushes

serie «G»
series (DIN 808)

- Giri max. 1000/min.
Max speed 1000 R.P.M.
- Angolo max. 45°
Max. angle 45°

MORO dal 1984
INDUSTRIAL FORNITURE



Mod. Type	d	D	L2	L1	C	Y	e	f	Codice / Code		SW	Peso Weight Kg			
02GR	8	16	52	26	14	9,5	3,5	6,3	SG0R 081C		2	9	SG0R 08SW	8	0,05
03GR	10	22	62	31	17	11,5	4	8,7 (8)	SG0R 101C		3	11	SG0R 10SW	10 (9,06)	0,12
04GR	12	25	74	37	21	13,5	4	11 (10,5)	SG0R 121C		4	13,3	SG0R 12SW	12 (11,15)	0,19
05GR	14	25	74	37	21	13,5	4	13	SG0R 141C		5	15,3	SG0R 14SW	14	0,17
1GR	16	32	86	43	24	14	6,35	14,8	SG0R 161C		5	18,3	SG0R 16SW	16	0,34
2GR	18	36	96	48	28	19	8	16	SG0R 181C		6	20,8	SG0R 18SW	18	0,48
3GR	20	42	108	54	31	19	8	18	SG0R 201C		6	22,8	SG0R 20SW	20	0,76
4GR	22	45	120	60	34	20,5	10	20	SG0R 221C		6	24,8	SG0R 22SW	22	0,97
5GR	25	50	132	66	38	20,5	10	23	SG0R 251C		8	28,3	SG0R 25SW	25	1,30
6GR	30	58	166	83	49	25	10	28	SG0R 301C		8	33,3	SG0R 30SW	30	2,13



GIUNTI SINGOLI ALTA VELOCITÀ CON CUSCINETTI A RULLINI

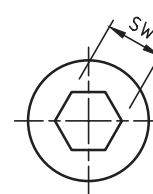
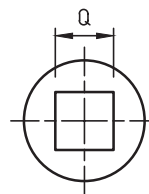
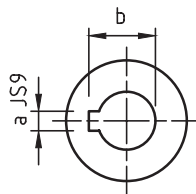
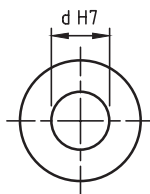
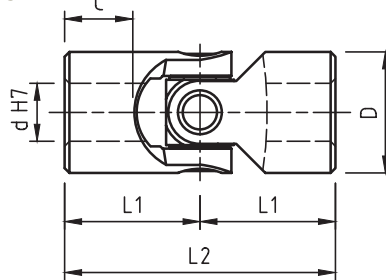
HIGH SPEED SINGLE JOINTS
WITH NEEDLE ROLLER BEARINGS

serie «H»
series (DIN 808)

- Cuscinetti a rullini lubrificati a vita. Nessuna manutenzione.
Roller bearings lubricated for life. No maintenance required.
- Precisi e versatili, silenziosi e scorrevoli; vasto campo di applicazione.
Precise and versatile, silent and smooth running; wide application field.
- Angolo max 45°. Giri max. 4000/min.
Max angle 45°. Max speed 4000 R.P.M.
- "H" corrispondenti DIN 808 - "HB" corrispondenti DIN 808/7551
"H" to DIN 808 - "HB" to DIN 808/7551
- Esecuzioni speciali a richiesta.
Special executions on request.



MORO dal 1984
INDUSTRIAL FORNITURE



Mod. Type	Codice / Code	d	D	L2	L1	C	Codice / Code	Codice / Code	a	b	Codice / Code	Q	* SW	Peso Weight Kg
03H	SH0S 1000	10	22	48	24	12	SH0S 101C	SH0S 102C	3	11,4	SH0S 102Q	10	10	0,10
04H	SH0S 1200	12	25	56	28	13	SH0S 121C	SH0S 122C	4	13,8	SH0S 122Q	12	12	0,16
05H	SH0S 1400	14	28	60	30	14	SH0S 141C	SH0S 142C	5	16,3	SH0S 142Q	14	14	0,20
1H	SH0S 1600	16	32	68	34	16	SH0S 161C	SH0S 162C	5	18,3	SH0S 162Q	16	16	0,30
2H	SH0S 1800	18	36	74	37	17	SH0S 181C	SH0S 182C	6	20,8	SH0S 182Q	18	18	0,45
3H	SH0S 2000	20	42	82	41	18	SH0S 201C	SH0S 202C	6	22,8	SH0S 202Q	20	20	0,60
4H	SH0S 2200	22	45	95	47,5	22	SH0S 221C	SH0S 222C	6	24,8	SH0S 222Q	22	22	0,95
5H	SH0S 2500	25	50	108	54	26	SH0S 251C	SH0S 252C	8	28,3	SH0S 252Q	25	25	1,20
6H	SH0S 3000	30	58	122	61	29	SH0S 301C	SH0S 302C	8	33,3	SH0S 302Q	30	30	1,85
6H1	SH0S 3200	32	58	130	65	33	SH0S 321C	SH0S 322C	10	35,3	SH0S 322Q	30	30	2,00
7H	SH0S 3500	35	70	140	70	33	SH0S 351C	SH0S 352C	10	38,3	—	**	**	3,15
8H	SH0S 4000	40	80	160	80	38	SH0S 401C	SH0S 402C	12	43,3	—	**	**	4,60
9H	SH0S 5000	50	95	190	95	46	SH0S 501C	SH0S 502C	14	53,8	—	**	**	7,60
04HB	SHBS 1200	12	22	62	31	18	SHBS 121C	SHBS 122C	4	13,8	SHBS 102Q	10	10	0,12
1HB	SHBS 1600	16	25	74	37	21	SHBS 161C	SHBS 162C	5	18,3	SHBS 122Q	12	12	0,20
3HB	SHBS 2000	20	32	86	43	24	SHBS 201C	SHBS 202C	6	22,8	SHBS 162Q	16	16	0,35
5HB	SHBS 2500	25	42	108	54	31	SHBS 251C	SHBS 252C	8	28,3	SHBS 202Q	20	20	0,80
6HB	SHBS 3000	30	50	132	66	38	SHBS 301C	SHBS 302C	8	33,3	SHBS 252Q	25	25	1,20
8HB	SHBS 4000	40	70	166	83	46	SHBS 401C	SHBS 402C	12	43,3	—	**	**	2,90

*= Non sempre disponibile a magazzino / Not always available in stock

**= A richiesta / On request

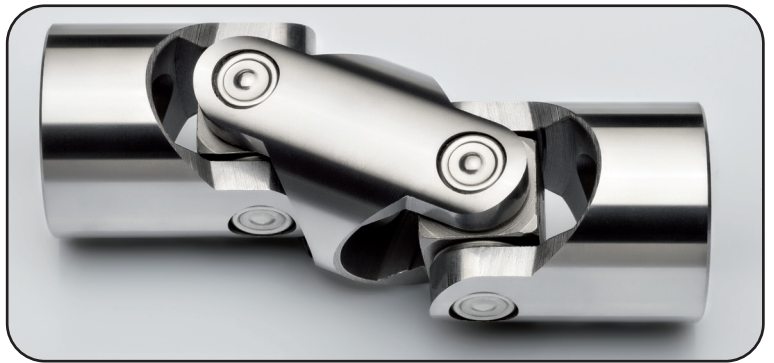


GIUNTI DOPPI ALTA VELOCITÀ CON CUSCINETTI A RULLINI

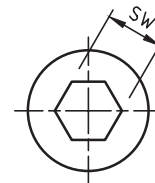
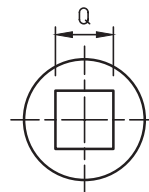
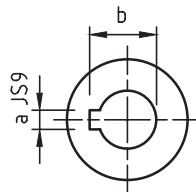
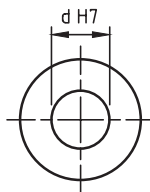
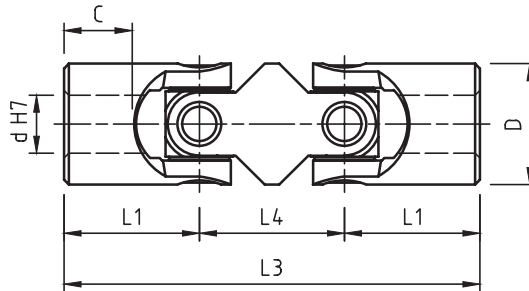
HIGH SPEED DOUBLE JOINTS
WITH NEEDLE ROLLER BEARINGS

serie «H»
series (DIN 808)

- Cuscinetti a rullini lubrificati a vita. Nessuna manutenzione.
Roller bearings lubricated for life. No maintenance required.
- Precisi e versatili, silenziosi e scorrevoli; vasto campo di applicazione.
Precise and versatile, silent and smooth running; wide application field.
- Angolo max 90°. Giri max. 4000/min.
Max angle 90°. Max speed 4000 R.P.M.
- "HD" corrispondenti DIN 808 - "HBD" corrispondenti DIN 808/7551
"HD" to DIN 808 - "HBD" to DIN 808/7551
- Esecuzioni speciali a richiesta.
Special executions on request.



MORO *dal 1984*
INDUSTRIAL FORNITURE



Mod. Type	Codice / Code	d	D	L3	L1	L4	C	Codice / Code	Codice / Code	a	b	Codice / Code	Q	* SW	Peso Weight Kg
03HD	SH0D 1000	10	22	74	24	26	12	SH0D 101C	SH0D 102C	3	11,4	SH0D 102Q	10	10	0,15
04HD	SH0D 1200	12	25	86	28	30	13	SH0D 121C	SH0D 122C	4	13,8	SH0D 122Q	12	12	0,25
05HD	SH0D 1400	14	28	96	30	36	14	SH0D 141C	SH0D 142C	5	16,3	SH0D 142Q	14	14	0,40
1HD	SH0D 1600	16	32	105	34	37	16	SH0D 161C	SH0D 162C	5	18,3	SH0D 162Q	16	16	0,45
2HD	SH0D 1800	18	36	114	37	40	17	SH0D 181C	SH0D 182C	6	20,8	SH0D 182Q	18	18	0,70
3HD	SH0D 2000	20	42	129	41	47	18	SH0D 201C	SH0D 202C	6	22,8	SH0D 202Q	20	20	1,00
4HD	SH0D 2200	22	45	145	47,5	50	22	SH0D 221C	SH0D 222C	6	24,8	SH0D 222Q	22	22	1,55
5HD	SH0D 2500	25	50	163	54	55	26	SH0D 251C	SH0D 252C	8	28,3	SH0D 252Q	25	25	2,00
6HD	SH0D 3000	30	58	190	61	68	29	SH0D 301C	SH0D 302C	8	33,3	SH0D 302Q	30	30	2,90
6HD1	SH0D 3200	32	58	198	65	68	33	SH0D 321C	SH0D 322C	10	35,3	SH0D 322Q	30	30	3,00
7HD	SH0D 3500	35	70	212	70	72	33	SH0D 351C	SH0D 352C	10	38,3	—	**	**	4,75
8HD	SH0D 4000	40	80	245	80	85	38	SH0D 401C	SH0D 402C	12	43,3	—	**	**	7,20
9HD	SH0D 5000	50	95	290	95	100	46	SH0D 501C	SH0D 502C	14	53,8	—	**	**	12,00
04HBD	SHBD 1200	12	22	88	31	26	18	SHBD 121C	SHBD 122C	4	13,8	SHBD 102Q	10	10	0,20
1HBD	SHBD 1600	16	25	104	37	30	21	SHBD 161C	SHBD 162C	5	18,3	SHBD 122Q	12	12	0,30
3HBD	SHBD 2000	20	32	123	43	37	24	SHBD 201C	SHBD 202C	6	22,8	SHBD 162Q	16	16	0,50
5HBD	SHBD 2500	25	42	155	54	47	31	SHBD 251C	SHBD 252C	8	28,3	SHBD 202Q	20	20	1,20
6HBD	SHBD 3000	30	50	187	66	55	38	SHBD 301C	SHBD 302C	8	33,3	SHBD 252Q	25	25	1,70
8HBD	SHBD 4000	40	70	238	83	72	46	SHBD 401C	SHBD 402C	12	43,3	—	**	**	4,30

* = Non sempre disponibile a magazzino / Not always available in stock

** = A richiesta / On request



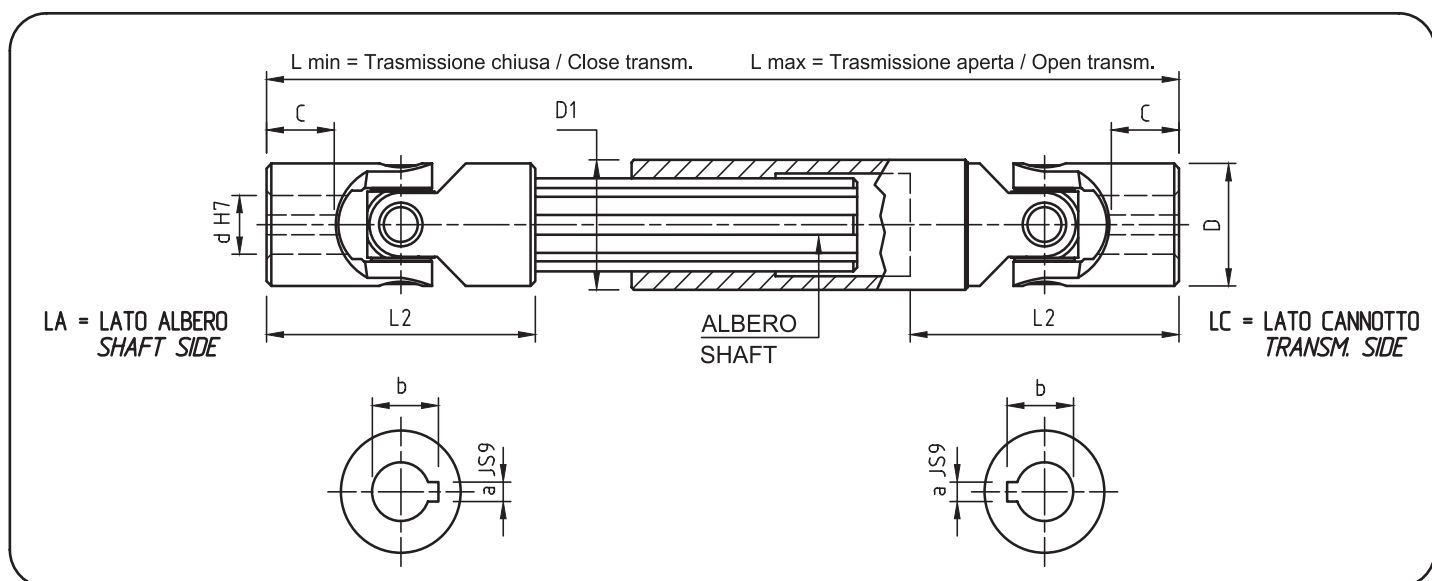
TRASMISSIONI ALLUNGABILI ALTA VELOCITÀ STANDARD

STANDARD EXTENSIBLE TRANSMISSIONS
HIGH SPEED

serie «H»
series (DIN 808)

- Giunti serie «H» alta velocità con cuscinetti a rullini.
High speed joints series «H» with needle roller bearings.
- Completi di cave per linguetta.
Complete with keyways.
- Ampia gamma di lunghezze per ogni modello.
Wide range of lengths per model.
- Consegna pronta.
Ready delivery.

MORO *dal 1984*
INDUSTRIAL FORNITURE



Mod. Type	Codice / Code	d	D	L2	C	L min.	L max.	corsa stroke	a	b	Albero Shaft	D1	Peso Weight Kg
03HA1	SH0A 1010	10	22	48	12	140	170	30	3	11,4	11 x 14 Z6	22	0,31
03HA15	SH0A 1015	10	22	48	12	160	200	40	3	11,4	11 x 14 Z6	22	0,36
03HA2	SH0A 1020	10	22	48	12	180	240	60	3	11,4	11 x 14 Z6	22	0,38
03HA25	SH0A 1025	10	22	48	12	230	330	100	3	11,4	11 x 14 Z6	22	0,50
04HA1	SH0A 1210	12	25	56	13	160	190	30	4	13,8	13 x 16 Z6	26	0,50
04HA15	SH0A 1215	12	25	56	13	180	225	45	4	13,8	13 x 16 Z6	26	0,56
04HA2	SH0A 1220	12	25	56	13	200	270	70	4	13,8	13 x 16 Z6	26	0,62
04HA23	SH0A 1223	12	25	56	13	220	300	80	4	13,8	13 x 16 Z6	26	0,67
04HA26	SH0A 1226	12	25	56	13	250	355	105	4	13,8	13 x 16 Z6	26	0,76
04HA29	SH0A 1229	12	25	56	13	280	420	140	4	13,8	13 x 16 Z6	26	0,84
04HA32	SH0A 1232	12	25	56	13	300	450	150	4	13,8	13 x 16 Z6	26	0,90
05HA1	SH0A 1410	14	28	60	14	170	200	30	5	16,3	13 x 16 Z6	29	0,62
05HA15	SH0A 1415	14	28	60	14	180	220	40	5	16,3	13 x 16 Z6	29	0,64
05HA18	SH0A 1418	14	28	60	14	200	260	60	5	16,3	13 x 16 Z6	29	0,72
05HA2	SH0A 1420	14	28	60	14	220	300	80	5	16,3	13 x 16 Z6	29	0,78
05HA23	SH0A 1423	14	28	60	14	250	350	100	5	16,3	13 x 16 Z6	29	0,87
05HA26	SH0A 1426	14	28	60	14	280	420	140	5	16,3	13 x 16 Z6	29	0,96



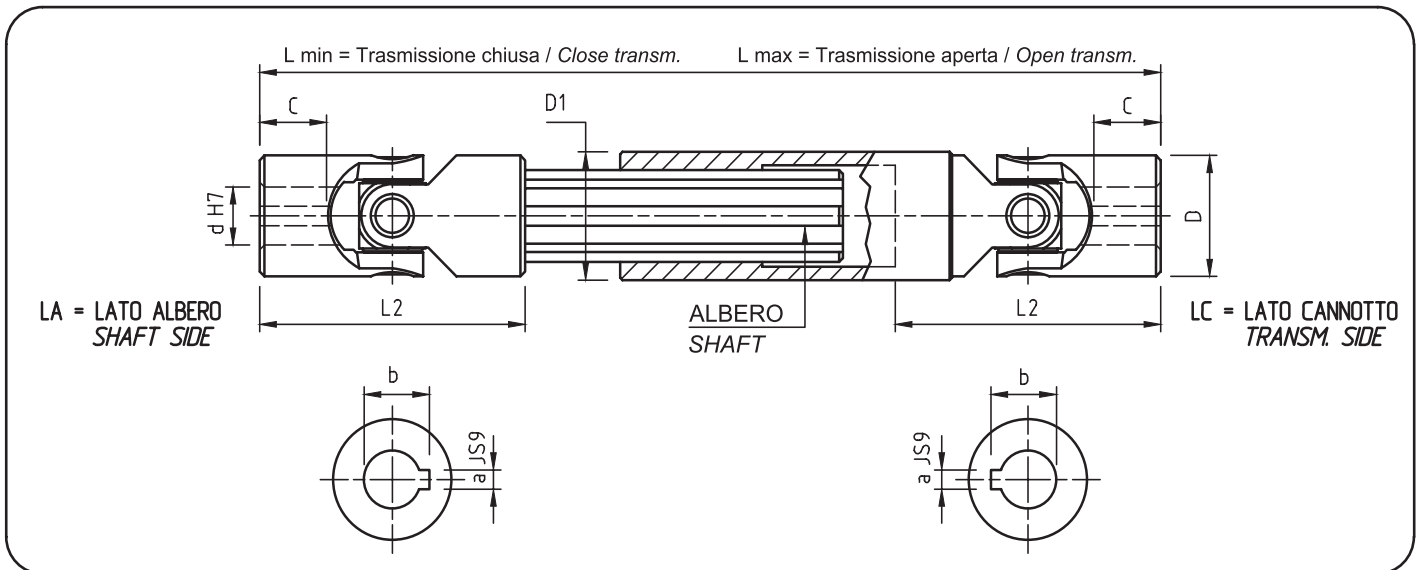
TRASMISSIONI ALLUNGABILI ALTA VELOCITÀ STANDARD

STANDARD EXTENSIBLE TRANSMISSIONS
HIGH SPEED

serie «H»
series (DIN 808)

- Giunti serie «H» alta velocità con cuscinetti a rullini.
High speed joints series «H» with needle roller bearings.
- Completi di cave per linguetta.
Complete with keyways.
- Ampia gamma di lunghezze per ogni modello.
Wide range of lengths per model.
- Consegna pronta.
Ready delivery.

MORO **MORO** *dal 1984*
INDUSTRIAL FORNITURE



Mod. Type	Codice / Code	d	D	L2	C	L min.	L max.	corsa stroke	a	b	Albero Shaft	D1	Peso Weight Kg
05HA29	SH0 A 1429	14	28	60	14	300	450	150	5	16,3	13 x 16 Z6	29	1,03
05HA32	SH0A 1432	14	28	60	14	350	550	200	5	16,3	13 x 16 Z6	29	1,17
05HA35	SH0A 1435	14	28	60	14	400	650	250	5	16,3	13 x 16 Z6	29	1,33
1HA1	SH0A 1610	16	32	68	16	190	220	30	5	18,3	16 x 20 Z6	32	0,90
1HA15	SH0A 1615	16	32	68	16	210	250	40	5	18,3	16 x 20 Z6	32	0,98
1HA2	SH0A 1620	16	32	68	16	240	320	80	5	18,3	16 x 20 Z6	32	1,10
1HA23	SH0A 1623	16	32	68	16	250	350	100	5	18,3	16 x 20 Z6	32	1,14
1HA26	SH0A 1626	16	32	68	16	275	390	115	5	18,3	16 x 20 Z6	32	1,24
1HA29	SH0A 1629	16	32	68	16	300	430	130	5	18,3	16 x 20 Z6	32	1,33
1HA32	SH0A 1632	16	32	68	16	380	590	210	5	18,3	16 x 20 Z6	32	1,60
1HA35	SH0A 1635	16	32	68	16	400	630	230	5	18,3	16 x 20 Z6	32	1,73
2HA1	SH0A 1810	18	36	74	17	230	280	50	6	20,8	18 x 22 Z6	37	1,35
2HA15	SH0A 1815	18	36	74	17	250	320	70	6	20,8	18 x 22 Z6	37	1,46
2HA18	SH0A 1818	18	36	74	17	270	370	100	6	20,8	18 x 22 Z6	37	1,55
2HA2	SH0A 1820	18	36	74	17	290	400	110	6	20,8	18 x 22 Z6	37	1,66
2HA23	SH0A 1823	18	36	74	17	300	415	115	6	20,8	18 x 22 Z6	37	1,71
2HA26	SH0A 1826	18	36	74	17	400	620	220	6	20,8	18 x 22 Z6	37	2,23
2HA29	SH0A 1829	18	36	74	17	500	820	320	6	20,8	18 x 22 Z6	37	2,75



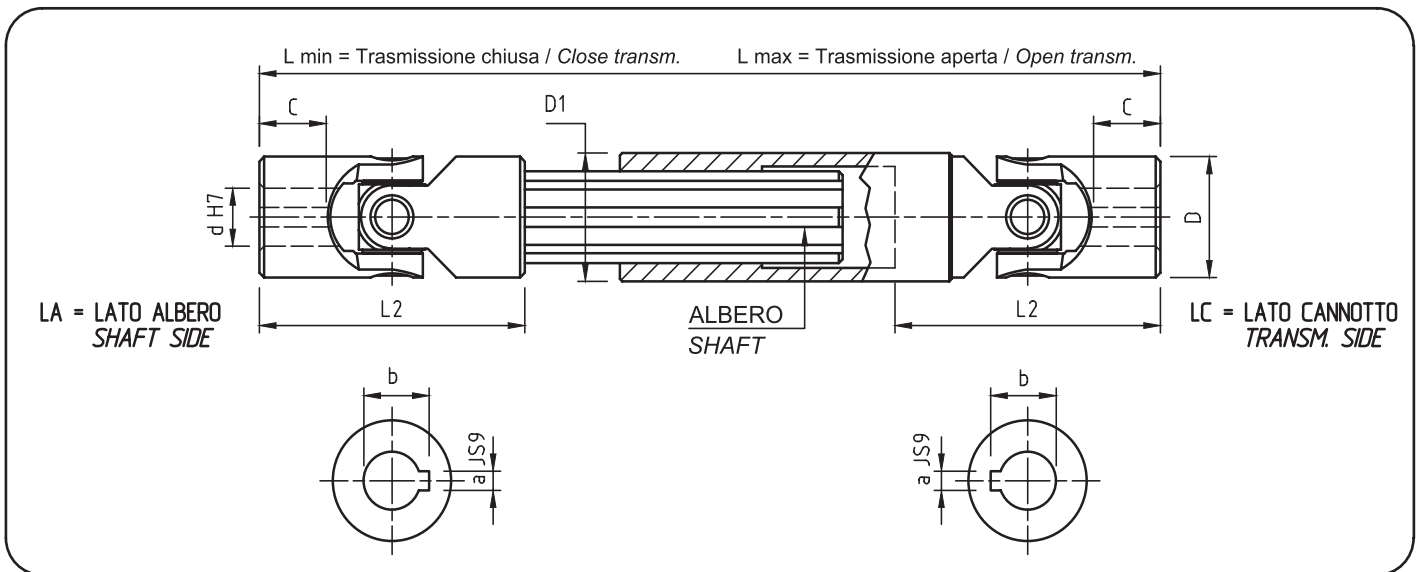
TRASMISSIONI ALLUNGABILI ALTA VELOCITÀ STANDARD

STANDARD EXTENSIBLE TRANSMISSIONS
HIGH SPEED

serie «H»
series (DIN 808)

- Giunti serie «H» alta velocità con cuscinetti a rullini.
High speed joints series «H» with needle roller bearings.
- Completi di cave per linguetta.
Complete with keyways.
- Ampia gamma di lunghezze per ogni modello.
Wide range of lengths per model.
- Consegna pronta.
Ready delivery.

MORO dal 1984
INDUSTRIAL FORNITURE



Mod. Type	Codice / Code	d	D	L2	C	L min.	L max.	corsa stroke	a	b	Albero Shaft	D1	Peso Weight Kg
3HA1	SH0A 2010	20	42	82	18	250	300	50	6	22,8	21 x 25 Z6	42	1,99
3HA15	SH0A 2015	20	42	82	18	270	340	70	6	22,8	21 x 25 Z6	42	2,12
3HA18	SH0A 2018	20	42	82	18	290	380	90	6	22,8	21 x 25 Z6	42	2,25
3HA2	SH0A 2020	20	42	82	18	320	440	120	6	22,8	21 x 25 Z6	42	2,46
3HA23	SH0A 2023	20	42	82	18	380	560	180	6	22,8	21 x 25 Z6	42	2,86
3HA26	SH0A 2026	20	42	82	18	420	640	220	6	22,8	21 x 25 Z6	42	3,13
3HA29	SH0A 2029	20	42	82	18	500	800	300	6	22,8	21 x 25 Z6	42	3,66
4HA05	SH0A 2205	22	45	95	22	250	280	30	6	24,8	23 x 28 Z6	47	2,35
4HA1	SH0A 2210	22	45	95	22	270	320	50	6	24,8	23 x 28 Z6	47	2,51
4HA15	SH0A 2215	22	45	95	22	290	350	60	6	24,8	23 x 28 Z6	47	2,67
4HA2	SH0A 2220	22	45	95	22	330	430	100	6	24,8	23 x 28 Z6	47	3,00
4HA23	SH0A 2223	22	45	95	22	350	470	120	6	24,8	23 x 28 Z6	47	3,16
4HA26	SH0A 2226	22	45	95	22	470	710	240	6	24,8	23 x 28 Z6	47	4,13
5HA1	SH0A 2510	25	50	108	26	295	345	50	8	28,3	26 x 32 Z6	52	3,39
5HA15	SH0A 2515	25	50	108	26	310	375	65	8	28,3	26 x 32 Z6	52	3,52
5HA2	SH0A 2520	25	50	108	26	350	450	100	8	28,3	26 x 32 Z6	52	3,92
5HA23	SH0A 2523	25	50	108	26	380	500	120	8	28,3	26 x 32 Z6	52	4,20
5HA26	SH0A 2526	25	50	108	26	420	590	170	8	28,3	26 x 32 Z6	52	4,59
5HA29	SH0A 2529	25	50	108	26	460	660	200	8	28,3	26 x 32 Z6	52	4,98
5HA32	SH0A 2532	25	50	108	26	500	745	245	8	28,3	26 x 32 Z6	52	5,37



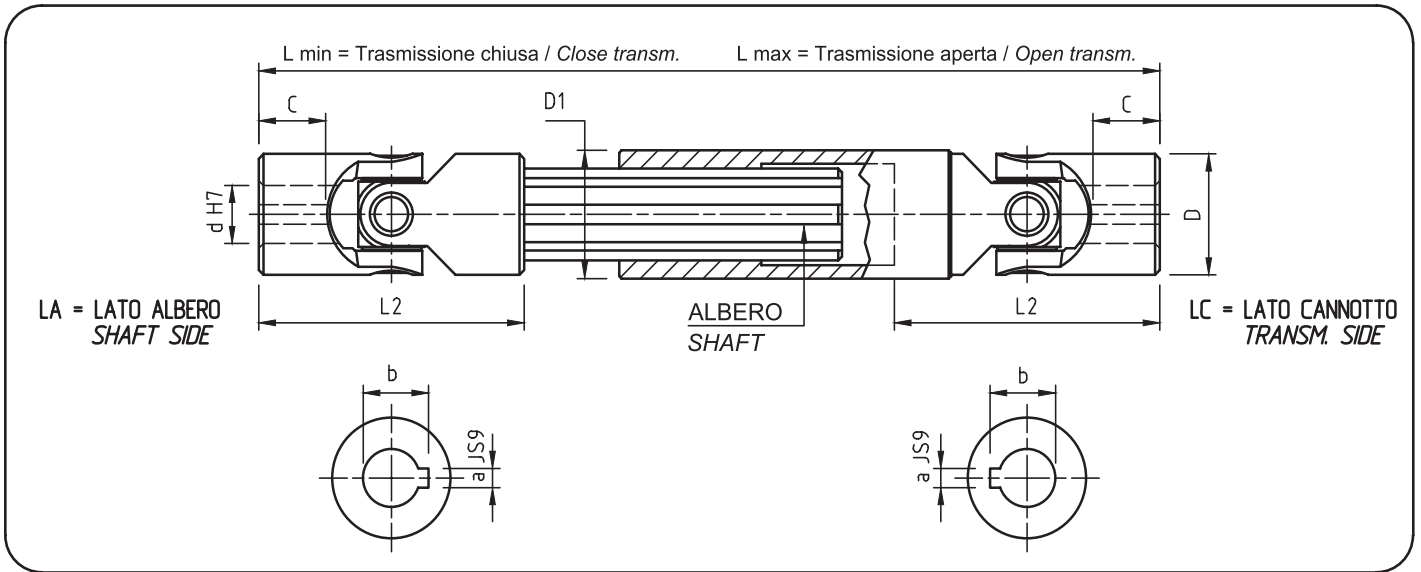
TRASMISSIONI ALLUNGABILI ALTA VELOCITÀ STANDARD

STANDARD EXTENSIBLE TRANSMISSIONS
HIGH SPEED

serie «H»
series (DIN 808)

- Giunti serie «H» alta velocità con cuscinetti a rullini.
High speed joints series «H» with needle roller bearings.
- Completi di cave per linguetta.
Complete with keyways.
- Ampia gamma di lunghezze per ogni modello.
Wide range of lengths per model.
- Consegna pronta.
Ready delivery.

MORO dal 1984
INDUSTRIAL FORNITURE



Mod. Type	Codice / Code	d	D	L2	C	L min.	L max.	corsa stroke	a	b	Albero Shaft	D1	Peso Weight Kg
6HA1	SH0A 3010	30	58	122	29	330	380	50	8	33,3	32 x 38 Z8	58	4,90
6HA15	SH0A 3015	30	58	122	29	350	420	70	8	33,3	32 x 38 Z8	58	5,17
6HA18	SH0A 3018	30	58	122	29	370	455	85	8	33,3	32 x 38 Z8	58	5,42
6HA2	SH0A 3020	30	58	122	29	400	510	110	8	33,3	32 x 38 Z8	58	5,85
6HA23	SH0A 3023	30	58	122	29	450	620	170	8	33,3	32 x 38 Z8	58	6,48
6HA26	SH0A 3026	30	58	122	29	500	720	220	8	33,3	32 x 38 Z8	58	7,14
6HA29	SH0A 3029	30	58	122	29	540	795	255	8	33,3	32 x 38 Z8	58	7,69



TRASMISSIONI ALLUNGABILI ALTA VELOCITÀ

EXTENSIBLE TRANSMISSIONS HIGH SPEED

serie «H»
series (DIN 808)

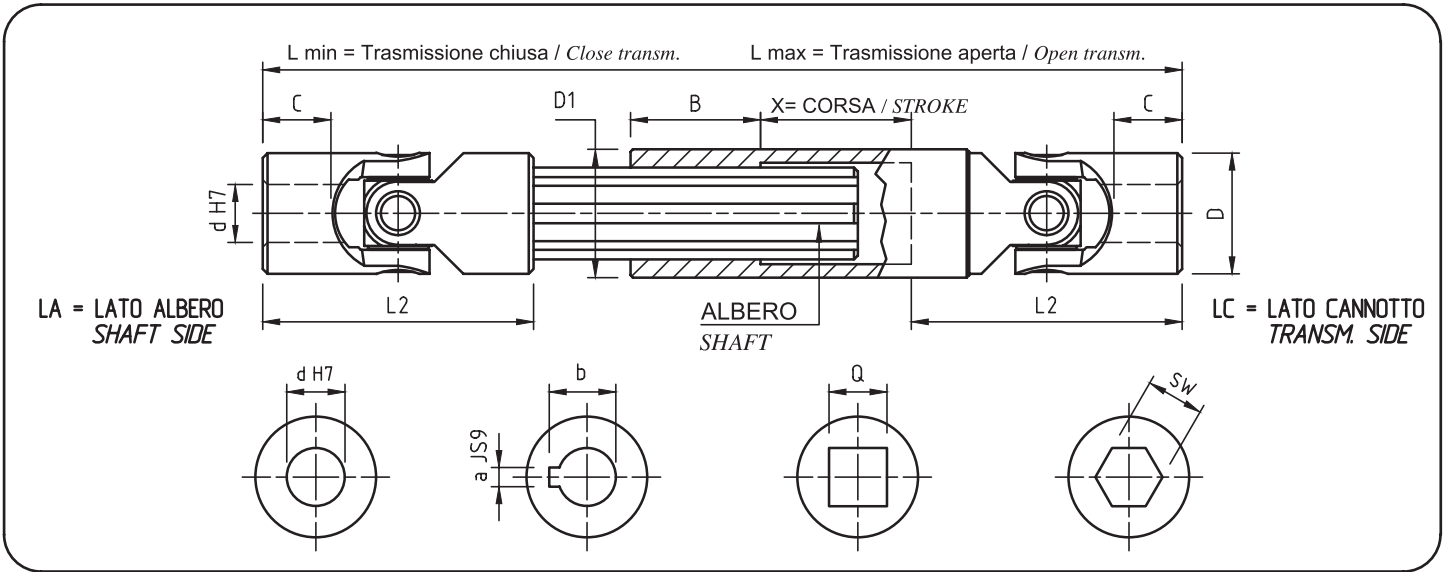
● Giunti serie «H» alta velocità con cuscinetti a rullini.
High speed joints series «H» with needle roller bearings.

● Lunghezze min. e max. a richiesta:
Min. and max. lengths on request:

$$L. MIN. > \frac{L. MAX. + 2 L2 + B}{2} \quad \text{CORSA X} < \frac{L. MAX. - 2 L2 - B}{2}$$

MIN. L. STROKE X

● Esecuzioni speciali a richiesta.
Special executions on request.



Mod. Type	d	D	L2	C	L min.	L max.	x	B	a	b	Q	* SW	Albero Shaft	D1
					a richiesta - on request									
03HA	10	22	48	12	←	→	—	30	3	11,4	10	10	11 x 14 Z6	22
04HA	12	25	56	13	←	→	—	40	4	13,8	12	12	13 x 16 Z6	26
05HA	14	28	60	14	←	→	—	40	5	16,3	14	14	13 x 16 Z6	29
1HA	16	32	68	16	←	→	—	40	5	18,3	16	16	16 x 20 Z6	32
2HA	18	36	74	17	←	→	—	40	6	20,8	18	18	18 x 22 Z6	37
3HA	20	42	82	18	←	→	—	45	6	22,8	20	20	21 x 25 Z6	42
4HA	22	45	95	22	←	→	—	45	6	24,8	22	22	23 x 28 Z6	47
5HA	25	50	108	26	←	→	—	45	8	28,3	25	25	26 x 32 Z6	52
6HA	30	58	122	29	←	→	—	50	8	33,3	30	30	32 x 38 Z8	58
6HA1	32	58	126	33	←	→	—	50	10	35,3	30	30	32 x 38 Z8	58
7HA	35	70	140	33	←	→	—	70	10	38,3	**	**	36 x 42 Z8	70
8HA	40	80	160	38	←	→	—	80	12	43,3	**	**	42 x 48 Z8	80
9HA	50	95	190	46	←	→	—	90	14	53,8	**	**	46 x 54 Z8	95
04HBA	12	22	55	18	←	→	—	30	4	13,8	10	10	11 x 14 Z6	22
1HBA	16	25	65	21	←	→	—	40	5	18,3	12	12	13 x 16 Z6	26
3HBA	20	32	77	24	←	→	—	40	6	22,8	16	16	16 x 20 Z6	32
5HBA	25	42	95	31	←	→	—	45	8	28,3	20	20	21 x 25 Z6	42
6HBA	30	50	120	38	←	→	—	45	8	33,3	25	25	26 x 32 Z6	52
8HBA	40	70	155	46	←	→	—	70	12	43,3	**	**	36 x 42 Z8	70

* = Non sempre disponibile a magazzino / Not always available in stock

** = A richiesta / On request



GIUNTI SINGOLI - INNESTO RAPIDO

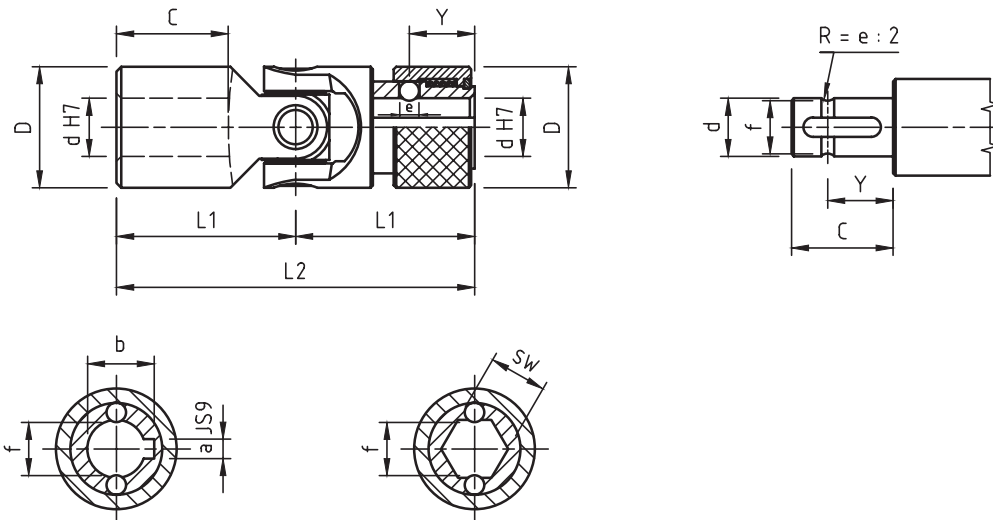
Mod. HR: Cuscinetti a rullini

SINGLE JOINTS - QUICK RELEASE
Type HR: Needle Roller Bearings

serie «H»
series (DIN 808)

- Giri max. 4000/min.
Max. speed 4000 R.P.M.
- Angolo max. 45°
Max. angle 45°

MORO dal 1984
INDUSTRIAL FORNITURE



Mod. Type	d	D	L2	L1	C	Y	e	f	Codice / Code		a	b	Codice / Code		SW	Peso Weight Kg
—	—	—	—	—	—	—	—	—	—	—	—	—	—	—	—	—
03HR	10	22	62	31	17	11,5	4	8,7 (8)	SG0R 101C		3	11	SG0R 10SW		10 (9,06)	0,12
04HR	12	25	74	37	21	13,5	4	11 (10,5)	SG0R 121C		4	13,3	SG0R 12SW		12 (11,15)	0,19
05HR	14	25	74	37	21	13,5	4	13	SG0R 141C		5	15,3	SG0R 14SW		14	0,17
1HR	16	32	86	43	24	14	6,35	14,8	SG0R 161C		5	18,3	SG0R 16SW		16	0,34
2HR	18	36	96	48	28	19	8	16	SG0R 181C		6	20,8	SG0R 18SW		18	0,48
3HR	20	42	108	54	31	19	8	18	SG0R 201C		6	22,8	SG0R 20SW		20	0,76
4HR	22	45	120	60	34	20,5	10	20	SG0R 221C		6	24,8	SG0R 22SW		22	0,97
5HR	25	50	132	66	38	20,5	10	23	SG0R 251C		8	28,3	SG0R 25SW		25	1,30
6HR	30	58	166	83	49	25	10	28	SG0R 301C		8	33,3	SG0R 30SW		30	2,13

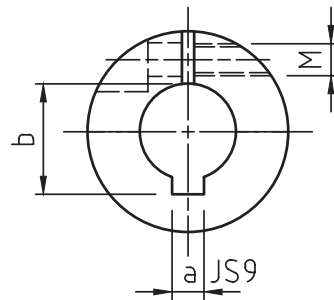
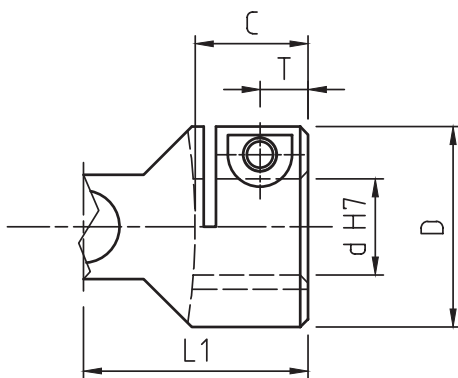
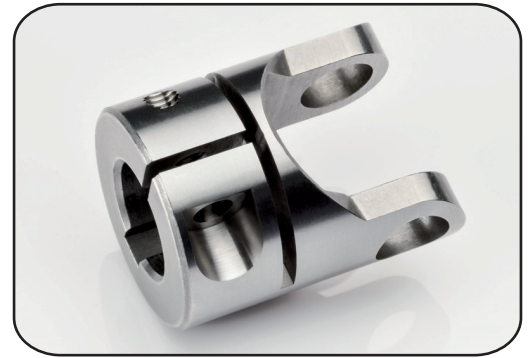


MOZZO A MORSETTO TIPO CL1

CLAMPING HUB
TYPE CL1

- Adatto per collegamenti rapidi e frequenti.
Fit for quick and frequent connections.
- Idoneo su applicazioni con presenza di vibrazioni.
Fit for applications with vibrations.
- Applicabile su giunti singoli, doppi, trasmissioni allungabili serie "G" "H".
Suitable to single, double and extensible joints "G" and "H" series.
- Esecuzioni speciali a richiesta.
Special executions on request.

MORO **MORO** S.M.C. *dal 1984*
INDUSTRIAL FORNITURE



*Ta: coppia di serraggio massima viti - *Maximum screw clamping torque*

Mod. Type	d	D	L1	C	a	b	M	T	*Ta (Nm)
03CL1	10	22	24	12	3	11,4	M4	5	5
04CL1	12	25	28	13	4	13,8	M4	6	5
05CL1	14	28	30	14	5	16,3	M4	6	5
1CL1	16	32	34	16	5	18,3	M5	7	9
2CL1	18	36	37	17	6	20,8	M5	7	9
3CL1	20	42	41	18	6	22,8	M6	8	16
4CL1	22	45	47,5	22	6	24,8	M6	8	16
5CL1	25	50	54	26	8	28,3	M6	9,5	16
6CL1	30	58	61	29	8	33,3	M8	11	36
7CL1	35	70	70	33	10	38,3	M8	13	36
8CL1	40	80	80	38	12	43,3	M10	14	65
9CL1	50	95	95	46	14	53,8	M12	17,5	100

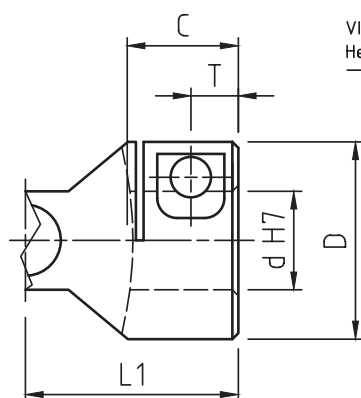


MOZZO A MORSETTO TIPO CL2

CLAMPING HUB

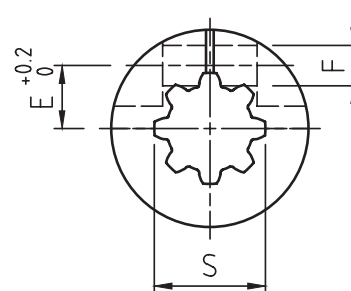
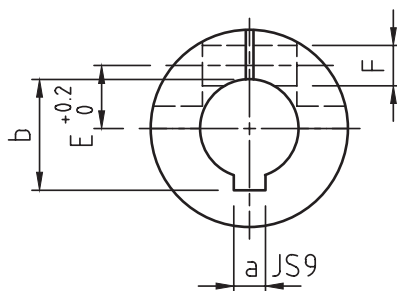
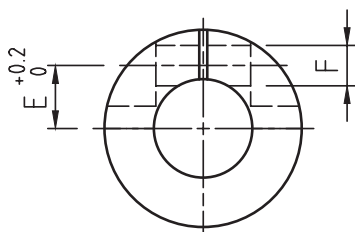
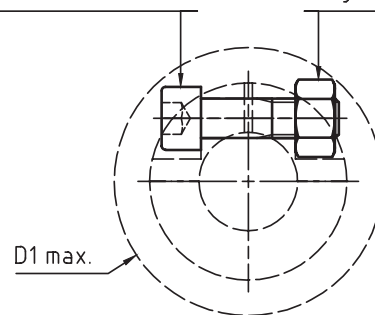
- Adatto per collegamenti rapidi e frequenti.
Fit for quick and frequent connections.
- Idoneo su applicazioni con presenza di vibrazioni.
Fit for applications with vibrations.
- Applicabile su giunti singoli, doppi, trasmissioni allungabili serie "G" "H".
Suitable to single, double and extensible joints "G" and "H" series.
- Esecuzioni speciali a richiesta.
Special executions on request.
- Sede per controdado di bloccaggio vite.
Lock nut screw seat.

MORO **MORO** *dal 1984*
INDUSTRIAL FORNITURE



VITE A TESTA CILINDRICA CON ESAGONO INCASSATO
Hex socket head cap screw

DADO ESAGONALE
Hexagon nut



*Ta: coppia di serraggio massima viti - Maximum screw clamping torque

Mod. Type	d	D	L1	C	F	E	T	a	b	S DIN 5482	vite	dado	ingombro max	Ta (Nm)
1CL2	16	32	34	16	∅ 6,2	9	7	5	18,3	17X14 Z9	M6x25	M6	∅ 42	15
2CL2	18	36	37	17	∅ 8,2	10	7,5	6	20,8	18X15 Z10	M8x30	M8	∅ 51	25
3CL2	20	42	41	18	∅ 8,2	12	8	6	22,8	20X17 Z12	M8x35	M8	∅ 57	25
5CL2	25	50	54	26	∅ 10,2	16	12	8	28,3	25X22 Z14	M10x35	M10	∅ 68	60